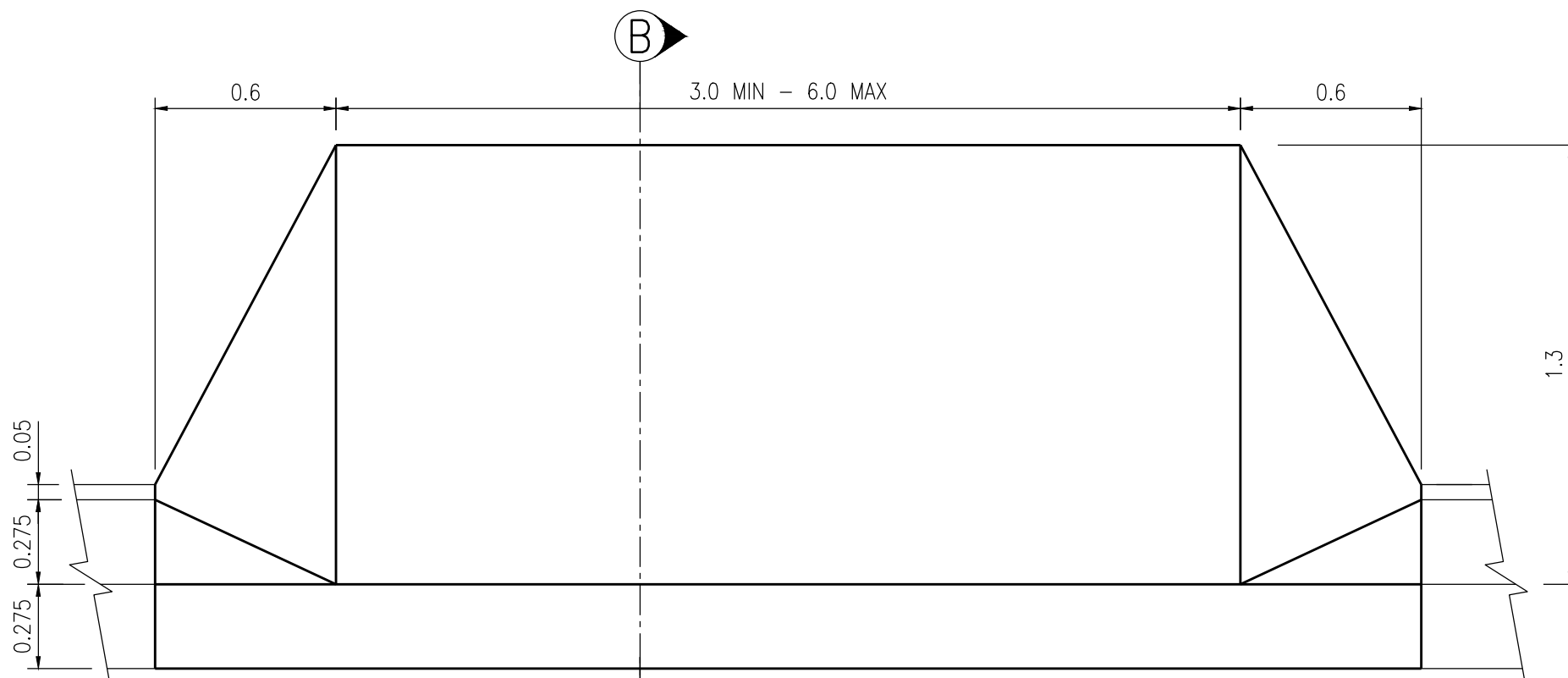
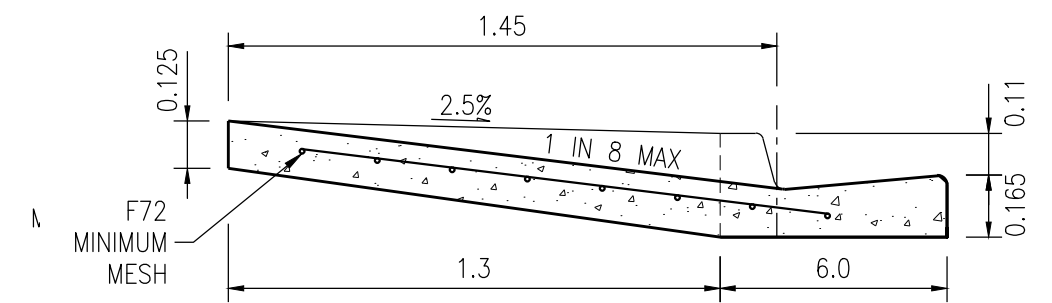


A PLAN - B1



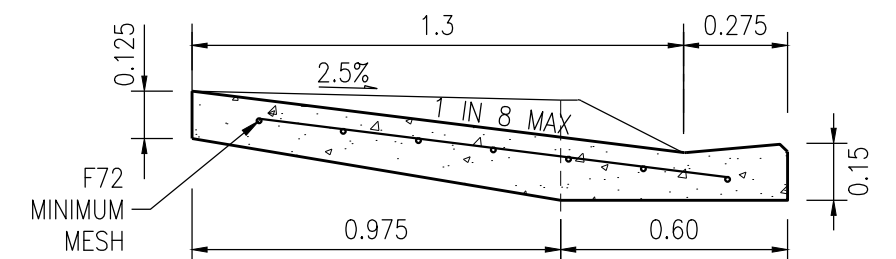
B PLAN - M1



SECTION A-A (RESIDENTIAL)  
B1

NOTES:

1. FOOTPATH SECTION TO VARY WHERE NECESSARY TO MATCH CONCRETE FOOTPATHS AND VERGE PROFILES. FOOTPATH EARTHWORKS ADJOINING CONCRETE MUST BE WELL COMPACTED.
2. RESIDENTIAL CROSSINGS CAN BE 3m MIN. TO 6m MAX.
3. ALL DIMENSIONS ARE IN METRES.
4. FOR KERB TYPES, REFER BRC STANDARD DRAWING R1020.
5. COUNCIL WILL NOT GUARANTEE REINSTATEMENT OF NON-STANDARD CONCRETE FINISHES IF COUNCIL NEEDS TO ACCESS INFRASTRUCTURE UNDER DRIVEWAY (EG. PIPES ETC) AND INSTALL CONCRETE FOOTPATHS TO COUNCIL STANDARDS.
6. FOR SECTIONAL DETAILS ON FOOTPATH/DRIVEWAY ACCESS SEE BUNDABERG REGIONAL COUNCIL PLAN R1010.



SECTION B-B (RESIDENTIAL)  
M1

Scales

NOT TO SCALE

Revisions

Revisions	Verified	Date
A Original Issue		

Quality Certification

Design:	Verified:
Drawing: Tifa	Checked:
Approved by Engineer	
Date:	RPEQ:



**DRIVEWAYS**  
**Residential Invert Crossings**  
**(Layback & Standard Kerb & Channel)**

Standard Drawing  
No **R1014**

Sheet Size  
**A3**

Rev